

AVE MARIA

Intermezzo sinfonico

z opery

Cavalleria rusticana

Pietro Mascagni

(1863-1945)

Andante sost. (♩ = 54)

housle

organo

Andante sost. (♩ = 54)

pp

rall.

5

pp

pp

9

sfz

5

sfz

13

pp

pp

pp dolcissimo

Ped.

*

17

pp

22

f

pp

mf

Red.

26

tra

30

>

>

34

f

39

f *p* *f*
dim.

44

p *p*

48

diminuendo *rit.* *pp*
rit. *pp*

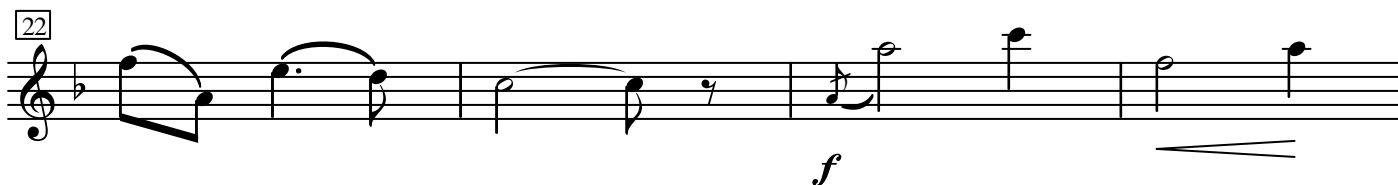
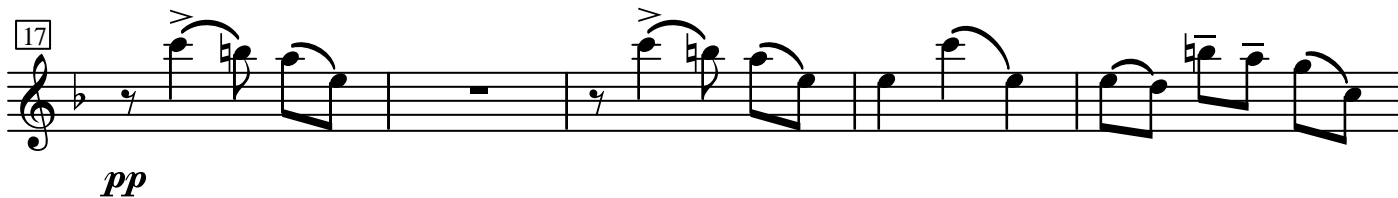
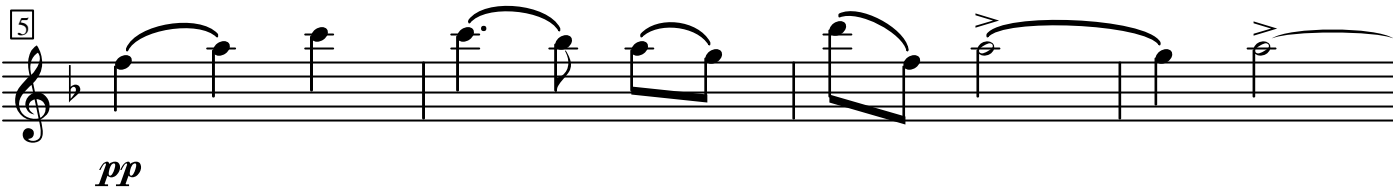
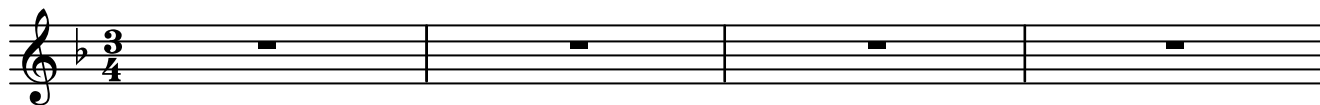
AVE MARIA

Intermezzo sinfonico
z opery
Cavalleria rusticana

Pietro Mascagni
(1863-1945)

Andante sost. (♩ = 54)

housle



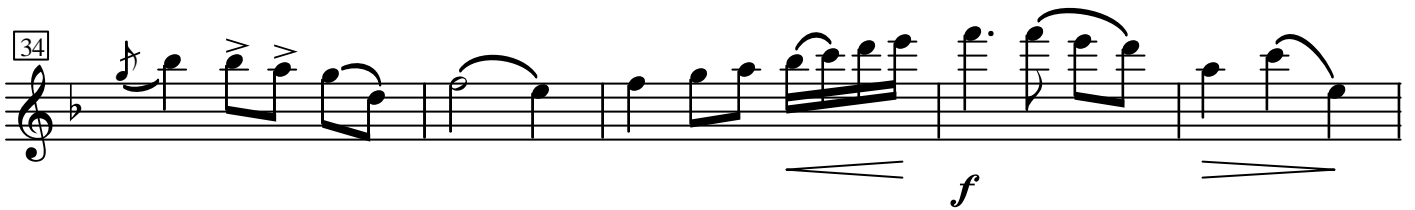
26



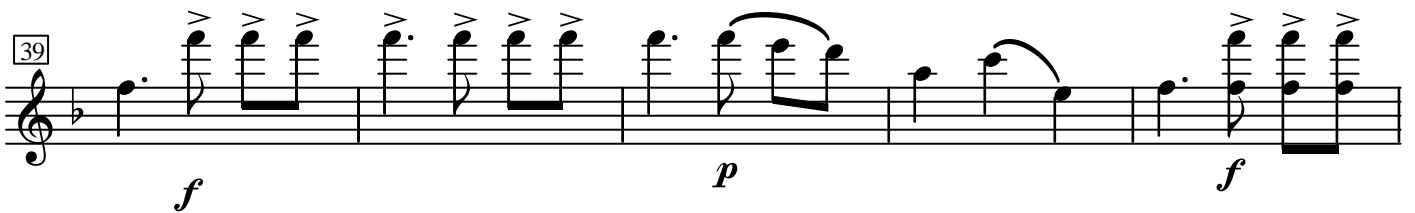
30



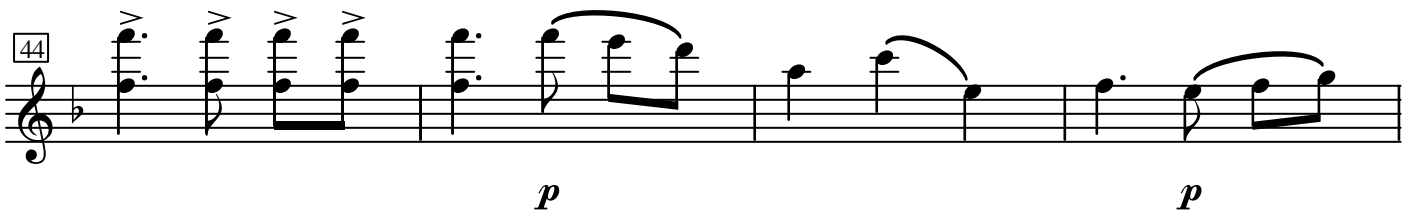
34



39



44



48

